

# New World Integration for Laserfiche<sup>®</sup>



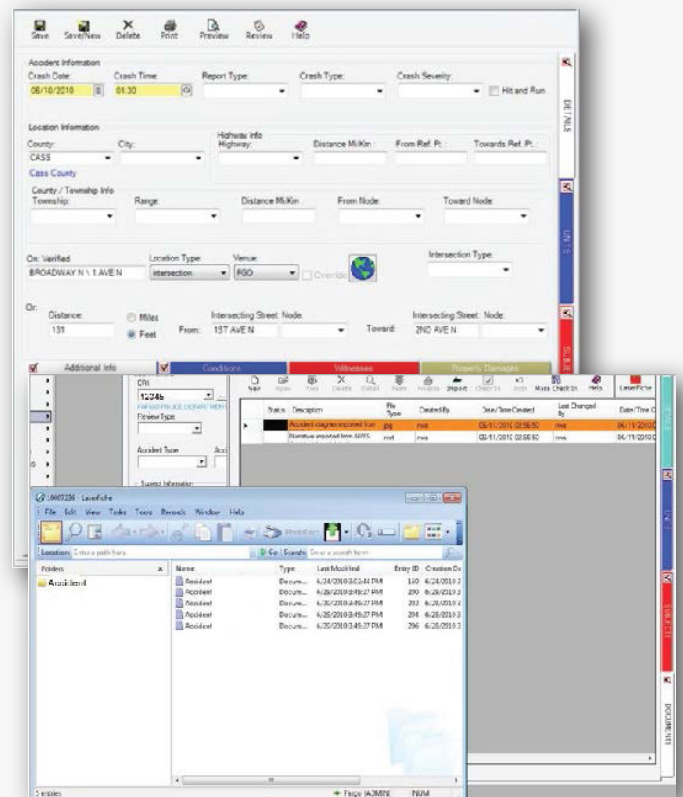
## ABOUT

CDI's New World<sup>®</sup> Integration offers the ability to access Laserfiche<sup>®</sup> Documents from New World Systems interface. Users can view Laserfiche Documents corresponding with New World records, as well as scan and upload Documents directly into the corresponding folder.

Features of CDI's New World Integration with Laserfiche Include:

- Real time notification in New World of existing documents or no existing documents contained within Laserfiche.
- Configuration page to correlate Laserfiche templates and tokens with New World metadata. Configuration can be different depending on New World module.
- View Laserfiche Documentation that corresponds to currently selected Record.
- Scan or Upload Documents into Laserfiche from the New World Interface.
- Use Laserfiche Client or Web Access.

CDI's New World Integration offers access to Laserfiche Documentation from the New World Systems interface. Located under the Documents tab in New World, users will find a Laserfiche button that indicates the existence of a corresponding Laserfiche folder. If no folder exists in Laserfiche, the Integration will create one.



The Scanning feature auto-populates Laserfiche Template data in the new Document, and imports it into the respective folder in Laserfiche. This integration also allows for uploading documents directly from the New World interface.